



# THR HD\_H Updater

## Operation Manual

The THR HD\_H Updater updates the software of the THR100HD/THR100H to their latest versions. Be sure to perform the update procedures correctly according to the instructions in this Operation Manual.

### Special Notices

- The software and this Operation Manual are the exclusive copyrights of Yamaha Corporation.
- Copying of the software or reproduction of this Operation Manual in whole or in part by any means is expressly forbidden without the written consent of the manufacturer.
- Yamaha makes no representations or warranties with regard to the use of the software and documentation and cannot be held responsible for the results of the use of this Operation Manual and the software.
- The screen displays as illustrated in this Operation Manual are for instructional purposes, and may appear somewhat different from the screens which appear on your computer.
- Copying of the commercially available musical data including but not limited to MIDI data and/or audio data is strictly prohibited except for your personal use.
- Windows is a registered trademark of Microsoft® Corporation in the United States and other countries.
- Apple, Mac and Macintosh are trademarks of Apple Inc., registered in the U.S. and other countries.
- The company names and product names in this Update Manual are the trademarks or registered trademarks of their respective companies.

This Operation Manual assumes that you are already familiar with basic Windows/Macintosh operations. If you are not, please refer to the owner's manual which came with your Windows/Mac OS software before using the THR HD\_H Updater.

### Precautions for Updating

- **The user accepts all responsibility when performing this update.**
- **Exit all applications before starting the updater.**
- **Disable your computer's energy-saving mode. In addition, if you are using a portable computer powered with a battery, make sure that the battery is adequately charged or connect the electrical adapter.**
- **Make sure that the VOLUME knob on the THR100HD/THR100H is set to its minimum level before turning it on/off or connecting/disconnecting the USB cable.**

### Requirements for Updating

- **Computer**  
Perform the update by connecting the THR100HD/THR100H to a computer.  
Use a Windows or Macintosh computer that meets the following requirements.  
[Windows] Windows 7 (32 bit/64 bit) or Windows 8.1 (32 bit/64 bit)  
[Mac] OS X 10.7 Lion, OS X 10.8 Mountain Lion, OS X 10.9 Mavericks, OS X 10.10 Yosemite
- **USB cable**  
Use a commercially available USB cable (Type-AB, less than 3 m long). A USB 3.0 cable cannot be used.

## Update Procedure

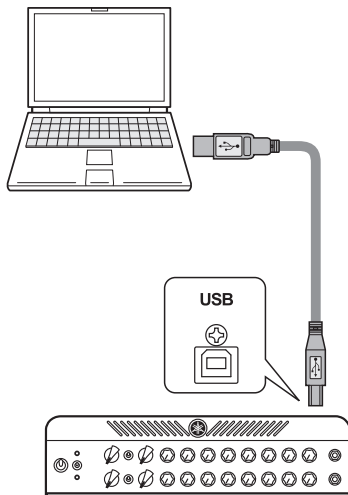
1. Make sure that the latest version of the “Yamaha Steinberg USB Driver” is installed on the computer.
  - \* Version 1.9.3 or later is compatible with the THR100HD/THR100H.
  - \* If it is not installed, download it from the following website, and then install it.

<http://download.yamaha.com/>

2. Download the updater “THR HD\_H Updater” from the following website, and then unzip the compressed ZIP file.

<http://download.yamaha.com/>

3. Connect a commercially available USB cable to the USB jacks of the THR100HD/THR100H and the computer.



### Precautions in regard to using the USB jack

Make sure you follow the points below when connecting a computer to the THR USB jack. Failing to do so may result in the computer or the THR freezing or shutting down, as well as corruption or even loss of data. If the device or computer does freeze, restart the application or computer.

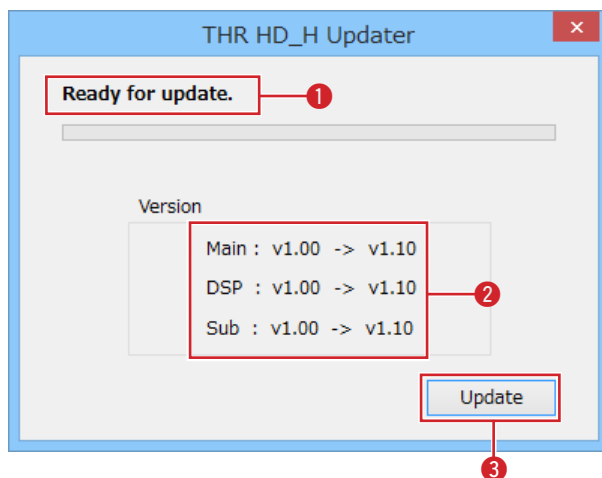
#### ⚠ CAUTION

- Use only an AB type USB cable less than three (3) meters in length. USB 3.0 cables are not compatible.
- Without using a USB hub, directly connect the computer and THR100HD/THR100H.
- Be sure to wake the computer from suspended/sleep/standby mode before connecting a computer to the USB jack.
- Always quit all applications that are running on the computer before connecting or disconnecting the USB cable.
- Wait at least 6 seconds between connecting or disconnecting the USB cable.
- Connecting the amplifier to a computer may block the computer's sound input/output. Switch to another device as needed.

4. **[For Windows]:** Double-click the “THR HD\_H Updater.exe” icon to start it.  
**[For Mac]:** Double-click the “THR HD\_H Updater.app” icon to start it.

\* If the THR has already been updated to the latest version, the message “Your firmware is up to date.” appears. In this case, updating is not necessary.

5. The updater dialog box (Windows version shown below) appears.



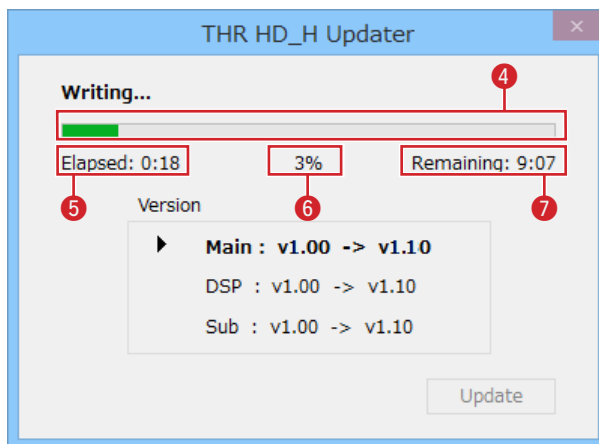
① Indicates the update step.

② Displays the version information for each device (Main, DSP and Sub). The number on the left indicates the current version, and the number on the right indicates the new version to be updated to.

\* THR100H does not have Sub.

③ Click to start updating.

6. After “Ready for update.” appears at ❶, click the [Update] button (❸) to start updating. During the update, an indicator on the THR flashes.

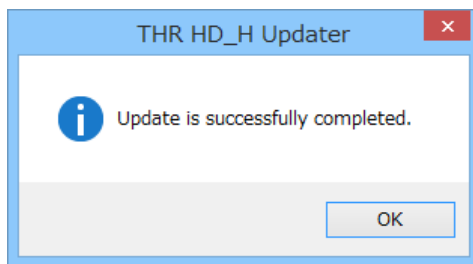


During the update, the progress status is indicated in the following ways, as shown at the left.

- ❹ Graph
- ❺ Elapsed time
- ❻ Percentage
- ❼ Estimated remaining time

- ⚠ CAUTION**
- The update takes approximately 10 minutes for the THR100HD and approximately 2 minutes and 30 seconds for the THR100H. During this time, do not operate the computer, turn off the THR or disconnect the USB cable.
  - If an error message appears during the update, close the updater, turn off the THR, and then restart the update from the beginning.

7. When the update is finished, the following message appears.



8. Click the [OK] button to close the updater.

## Troubleshooting

If you experience problems such as “no sound” or “abnormal operation”, first make sure that the THR100HD/THR100H is properly connected to the computer. If the problem persists, please check the following items.

- **The update step remains on “Connecting..”**
  - Is the latest version of the “Yamaha Steinberg USB Driver” installed?
  - Try replacing the USB cable.
- **During the update, an error message appears.**
- **After the update is finished, the THR indicator flashes and no sound is produced.**
  - Close the updater, turn off the THR, and then restart the update from the beginning.