



How to Bluetooth Pair Yamaha Headphones

[YH-E700A](#)

[YH-E500A](#)

[EP-E70A](#)

[EP-E50A](#)

[EP-E30A](#)

[TW-E7A](#)

[TW-E5A](#)

[TW-E3A](#)

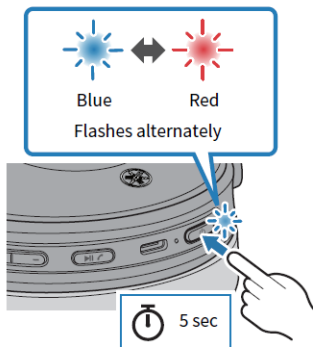
YH-E700A Wireless Noise-Cancelling Headphones

Registering a Bluetooth device (pairing)

When first connecting this product to a Bluetooth device, follow the steps below to register (pair) this product with that device.

1 Set this product to pairing mode.

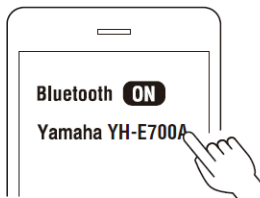
With the power turned off, hold down the Power key until the indicator flashes as shown in the illustration below. You will hear the “Pairing” audio message in the earphone, and the earphone will enter registration (pairing) standby mode.



2 Activate the Bluetooth function on the Bluetooth device.

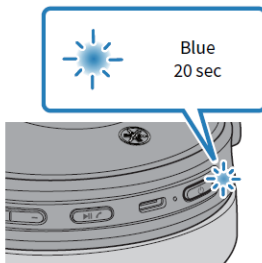
A list of Bluetooth devices that can be connected will be shown.

3 Select this product from this list on your Bluetooth device.



If successfully connected, you will hear the “Pairing Successful” audio message.

The indicator on this product lights up blue (for about 20 seconds).



NOTE

- Pairing standby mode will automatically end after about two minutes. To register again, start from step 1.
- Up to 8 devices can be registered with this product. From the 9th device on, older registrations will be deleted (the oldest is deleted first).
- If a passkey is required when connecting, input “0000”.

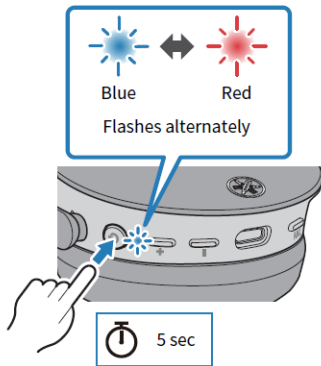
YH-E500A Wireless Noise-Cancelling Headphones

Registering a Bluetooth device (pairing)

When first connecting this product to a Bluetooth device, follow the steps below to register (pair) this product with that device.

1 Set this product to pairing mode.

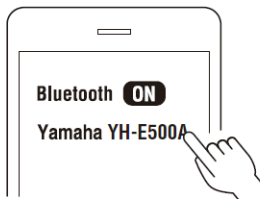
With the power turned off, hold down the Function key until the indicator flashes as shown in the illustration below. You will hear the “Pairing” audio message in the earphone, and the earphone will enter registration (pairing) standby mode.



2 Activate the Bluetooth function on the Bluetooth device.

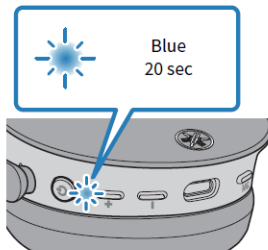
A list of Bluetooth devices that can be connected will be shown.

3 Select this product from this list on your Bluetooth device.



If successfully connected, you will hear the “Pairing Successful” audio message.

The indicator on this product lights up blue (for about 20 seconds).



NOTE

- Pairing standby mode will automatically end after about two minutes. To register again, start from step 1.
- Up to 8 devices can be registered with this product. From the 9th device on, older registrations will be deleted (the oldest is deleted first).
- If a passkey is required when connecting, input “0000”.

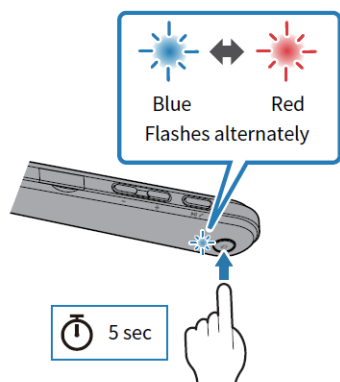
EP-E70A Wireless Noise-Cancelling Earphones

Registering a Bluetooth device (pairing)

When first connecting this product to a Bluetooth device, follow the steps below to register (pair) this product with that device.

1 Set this product to pairing mode.

With the controller turned off, hold down the Power key on the controller until the indicator flashes as shown in the illustration below. You will hear the “Pairing” audio message in the earphone, and the earphone will enter registration (pairing) standby mode.



2 Activate the Bluetooth function on the Bluetooth device.

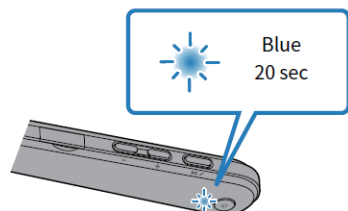
A list of Bluetooth devices that can be connected will be shown.

3 Select this product from this list on your Bluetooth device.



If successfully connected, you will hear the “Pairing Successful” audio message.

The indicator on this product lights up blue (for about 20 seconds).



NOTE

- Pairing standby mode will automatically end after about two minutes. To register again, start from step 1.
- Up to 8 devices can be registered with this product. From the 9th device on, older registrations will be deleted (the oldest is deleted first).
- If a passkey is required when connecting, input “0000”.

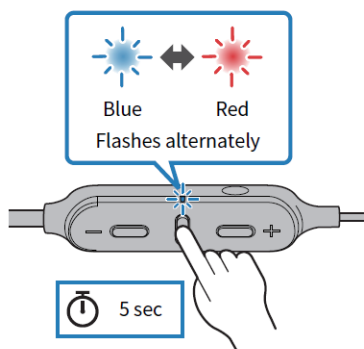
EP-E50A Wireless Noise-Cancelling Earphones

Registering a Bluetooth device (pairing)

When first connecting this product to a Bluetooth device, follow the steps below to register (pair) this product with that device.

1 Set this product to pairing mode.

With the controller turned off, hold down the Function key on the controller until the indicator flashes as shown in the illustration below. You will hear the “Pairing” audio message in the earphone, and the earphone will enter registration (pairing) standby mode.



2 Activate the Bluetooth function on the Bluetooth device.

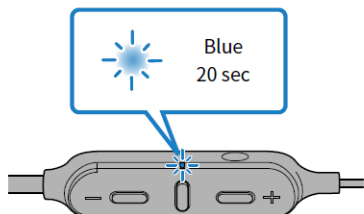
A list of Bluetooth devices that can be connected will be shown.

3 Select this product from this list on your Bluetooth device.



If successfully connected, you will hear the “Pairing Successful” audio message.

The indicator on this product lights up blue (for about 20 seconds).



NOTE

- Pairing standby mode will automatically end after about two minutes. To register again, start from step 1.
- Up to 8 devices can be registered with this product. From the 9th device on, older registrations will be deleted (the oldest is deleted first).
- If a passkey is required when connecting, input “0000”.

[Complete User Guide](#)

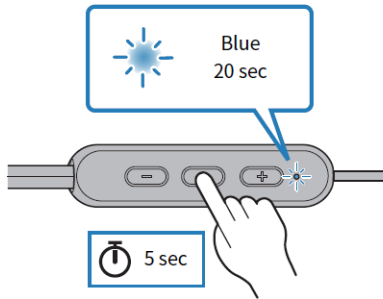
EP-E30A Wireless Earphones

Registering a Bluetooth device (pairing)

When first connecting this product to a Bluetooth device, follow the steps below to register (pair) this product with that device.

1 Set this product to pairing mode.

With the controller turned off, hold down the Function key on the controller until the indicator flashes as shown in the illustration below. You will hear the “Pairing” audio message in the earphone, and the earphone will enter registration (pairing) standby mode.



2 Activate the Bluetooth function on the Bluetooth device.

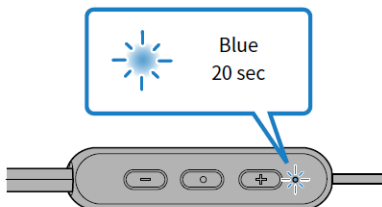
A list of Bluetooth devices that can be connected will be shown.

3 Select this product from this list on your Bluetooth device.



If successfully connected, you will hear the “Pairing Successful” audio message.

The indicator on the controller lights up blue (for about 20 seconds), then flashes in five-second intervals.



NOTE

- Pairing standby mode will automatically end after about two minutes. To register again, start from step 1.
- Up to 8 devices can be registered with this product. From the 9th device on, older registrations will be deleted (the oldest is deleted first).
- If a passkey is required when connecting, input “0000”.

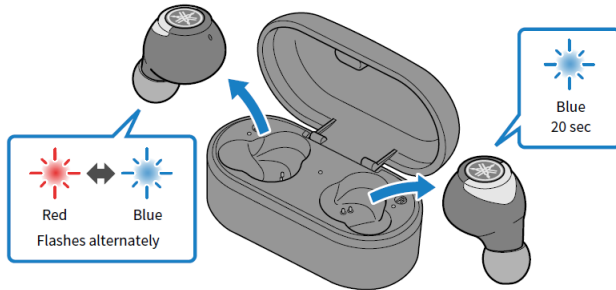
TW-E7A True Wireless Noise-Cancelling Earbuds

Registering a Bluetooth device (pairing)

When first connecting this product to a Bluetooth device, follow the steps below to register (pair) this product with that device.

1 Set this product to pairing mode.

First, remove the earphone (L) and wait until the LEDs are lit as shown in the illustration below. Next, remove the earphone (R). The earphone (L) will enter pairing standby mode.



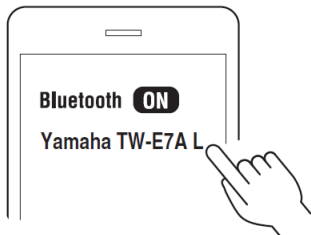
NOTE

If both earphones are alternately flashing red/blue, they cannot be successfully registered (paired). Place both earphones back into the charging case and take them out again.

2 Activate the Bluetooth function on the Bluetooth device.

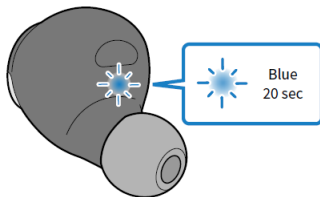
A list of Bluetooth devices that can be connected will be shown.

3 Select this product from this list on your Bluetooth device.



If successfully connected, you will hear the "Pairing Successful" audio message.

The indicator on the earphone will light up as shown below.



Next, you will see a message to register (pair) the other earphone. Follow the instructions to register (pair).

The other earphone may be listed as "Headset," depending on the Bluetooth device.

NOTE

- Pairing standby mode will automatically end after about two minutes. To register again, start from step 1.
- Up to 3 devices can be registered with this product. From the 4th device on, older registrations will be deleted (the oldest is deleted first).
- If a passkey is required when connecting, input "0000".
- You can also set the earphones in registration (pairing) mode by disconnecting the earphones with the connected Bluetooth device.

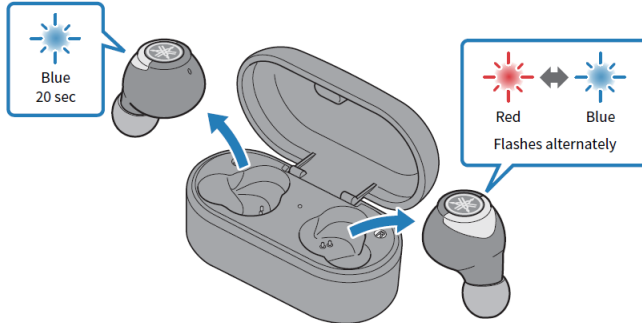
TW-E5A True Wireless Earbuds

Registering a Bluetooth device (pairing)

When first connecting this product to a Bluetooth device, follow the steps below to register (pair) this product with that device.

1 Set this product to pairing mode.

First, remove the earphone (R) and wait until the LEDs are lit as shown in the illustration below. Next, remove the earphone (L). The earphone (R) will enter pairing standby mode.



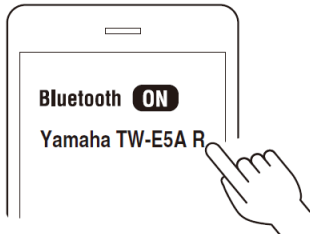
NOTE

If both earphones are alternately flashing red/blue, they cannot be successfully registered (paired). Place both earphones back into the charging case and take them out again.

2 Activate the Bluetooth function on the Bluetooth device.

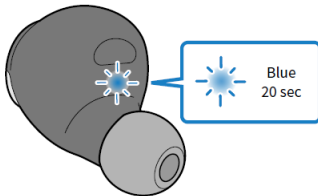
A list of Bluetooth devices that can be connected will be shown.

3 Select this product from this list on your Bluetooth device.



If successfully connected, you will hear the “Pairing Successful” audio message.

The indicator on the earphone will light up as shown below.



Next, you will see a message to register (pair) the other earphone. Follow the instructions to register (pair).

The other earphone may be listed as “Headset,” depending on the Bluetooth device.

NOTE

- Pairing standby mode will automatically end after about two minutes. To register again, start from step 1.
- Up to 3 devices can be registered with this product. From the 4th device on, older registrations will be deleted (the oldest is deleted first).
- If a passkey is required when connecting, input “0000”.
- You can also set the earphones in registration (pairing) mode by disconnecting the earphones with the connected Bluetooth device.

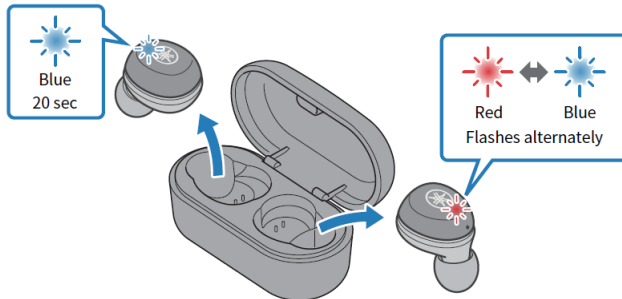
TW-E3A True Wireless Earbuds

Registering a Bluetooth device (pairing)

When first connecting this product to a Bluetooth device, follow the steps below to register (pair) this product with that device.

1 Set this product to pairing mode.

First, remove the earphone (R) and wait until the LEDs are lit as shown in the illustration below. Next, remove the earphone (L). The earphone (R) will enter pairing standby mode.



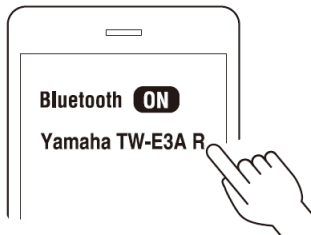
NOTE

If both earphones are alternately flashing red/blue, they cannot be successfully registered (paired). Place both earphones back into the charging case and take them out again.

2 Activate the Bluetooth function on the Bluetooth device.

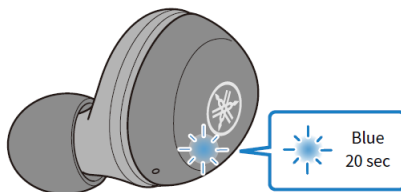
A list of Bluetooth devices that can be connected will be shown.

3 Select this product from this list on your Bluetooth device.



If successfully connected, you will hear the "Pairing Successful" audio message.

The indicator on the earphone will light up as shown below.



Next, you will see a message to register (pair) the other earphone. Follow the instructions to register (pair).

The other earphone may be listed as "Headset," depending on the Bluetooth device.

NOTE

- Pairing standby mode will automatically end after about two minutes. To register again, start from step 1.
- Up to 3 devices can be registered with this product. From the 4th device on, older registrations will be deleted (the oldest is deleted first).
- If a passkey is required when connecting, input "0000".
- You can also set the earphones in registration (pairing) mode by disconnecting the earphones with the connected Bluetooth device.