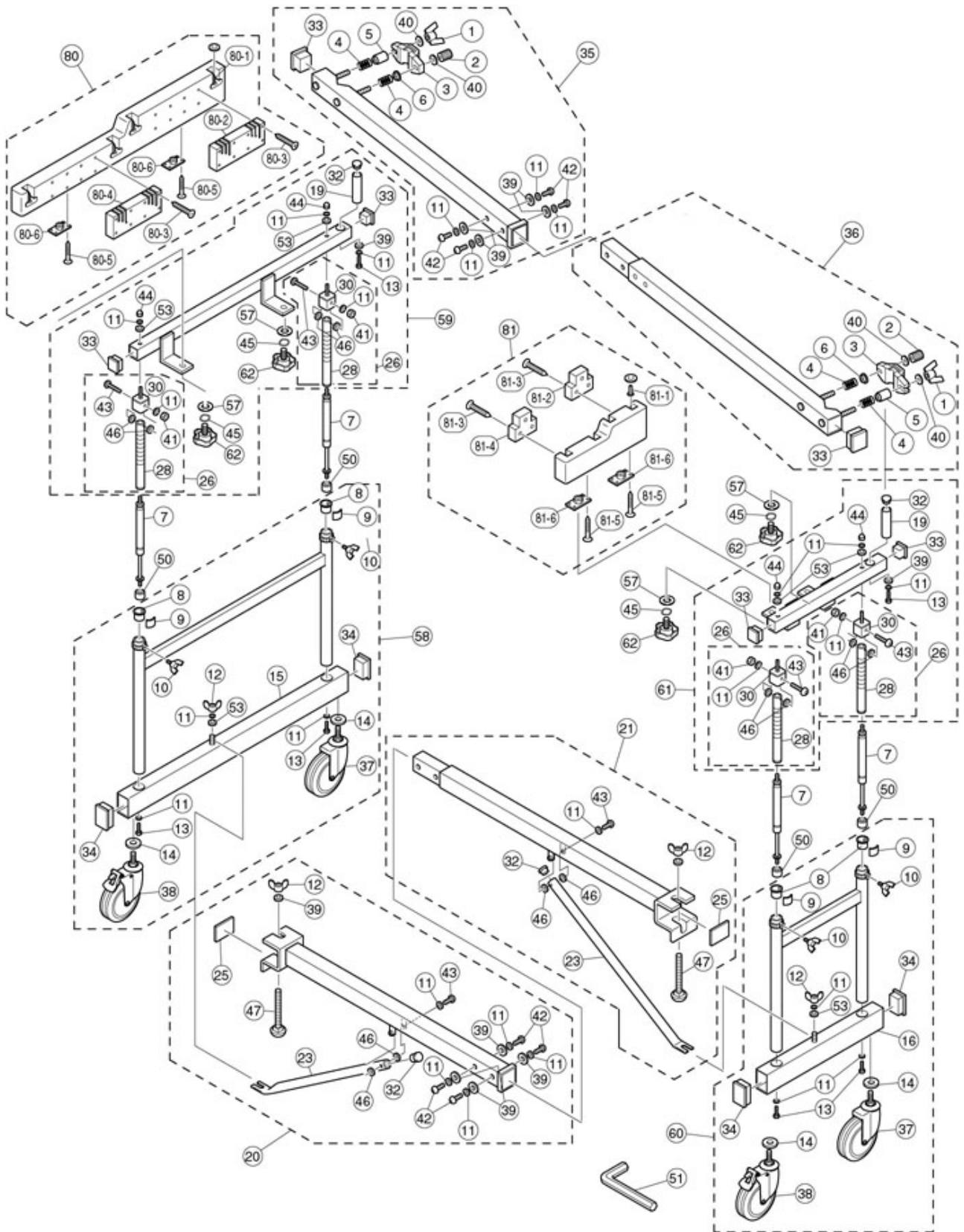


Model Name : YMRD2900



## Model Name : YMRD2900

Ref No.	Parts No.(ChangeNo.)	English Name	Minimum Delivery	Accept order or not
1	U0123510	WING NUT (A) CH-703	1 PC	
10	WV430870	YAMAHA BOLT N1 YM5100A	1 PC	
100	WV435870	HEXAGONAL NUT YM5100A	1 PACK(6PC/PACK)	
101	WWA34040	BUTTON HEAD BOLT4X16 YMRD2900A	1 PC	
11	WV435620	SPRING WASHER YM5100A=WV435630	1 PC	
12	WV435770	WING NUT M8 MFZN2-BL RD2400	1 PC	
13	W5111321	LEG MOUNTING BOLT YM41	1 PC	
14	WV450870	SPRING LOCK WASHER #2 16 MFZN2-BL RD2400	1 PC	
15	WV885210	LEG BASE ASSY (LOW TONE END) RD2400	1 PC	
16	WV885220	LEG BASE ASSY (HIGH TONE END) RD2400	1 PC	
19	WV885450	RACK POLE RD2400	1 PC	
2	U0663370	CLAMP NUT M8 (2) AC910	1 PC	
20	WWE68990	CROSSBAR SUPPORT ASSY (LOW TONE END) RD2	1 PC	
21	WWE69000	CROSSBAR SUPPORT ASSY (HIGH TONE END) RD	1 PC	
23	WV885510	LEG STAY RD2400	1 PC	
25	WV885530	CROSSBAR SUPPORT CLAMP RUBBER RD2400	1 PC	
26	WWF31990	SLIDE GUIDE ASSY RD2900	1 PC	
28	WWF32000	SLIDE GUIDE RD2900	1 PC	
3	U0692010	OPEN CLAMP AC910	1 PC	
30	WV885790	LEG HOLDER RD2400	1 PC	
32	WV885550	CIRCULAR CAP RD2400	1 PC	
33	WV885870	SQUARE CAP RD2400	1 PC	
34	WV886160	RECTANGULAR CAP RD2400	1 PC	
35	WWE69010	RACK PIPE ASSY (LOW TONE END) RD2900	1 PC	
36	WWE69020	RACK PIPE ASSY (HIGH TONE END) RD2900	1 PC	
37	WV886140	CASTER RD2400	1 PC	
38	WV886150	CASTER(WITH BRAKE) RD2400	1 PC	
39	EV203086	PLAIN WASHAR 8.0MM YM2400	1 PACK(6PC/PACK)	
4	U0693120	OPEN CLAMP SPRING AC910	1 PC	
40	U0525720	METAL WASHER M8 ZP WHS850,850S	1 PC	
41	WV886290	HEXAGON NUT #1 M8 MFZN2-BL RD2400	1 PC	
42	V8863000	HEXAGON SOCKET BUTTON HEAD SCREW M8X16 M	1 PC.	
43	WV886310	HEXAGON SOCKET BUTTON HEAD SCREW M8X45 M	1 PC	
44	WV886340	DOMED CAP NUT #3 M8 MFZN2-BL RD2400	1 PC	
45	WV886350	WAVE WASHER 12 MFZN2-BL RD2400	1 PC	
46	WV886360	NYLON WASHER 8.5X18X1.6 RD2400	1 PC	
47	WV886370	CUP HEAD SQUARE NECK BOLT M8X70 MFZN2-BL	1 PC	
5	U0697040	SPRING COLLAR (1) AC910	1 PC	
50	WV886520	CIRCULAR NUT RD2400 RD2400	1 PC	
51	WV899530	HEXAGON WRENCH 5MM BLACK RD2400	1 PC	

Model Name : YMRD2900

Ref No.	Parts No.(ChangeNo.)	English Name	Minimum Delivery	Accept order or not
53	WV929780	PLANE WASHER 8X22X1.6 MFZN2-BL RD2400	1 PC	
57	WWB79990	PLANE WASHER 12.5X32X2.3 MFZN2-BL RD2400	1 PC	
58	WWD12360	LEG PIPE LEG BASE UNIT (LOW TONE END) RD	1 PC	
59	WWF32010	SIDE PIPE UNIT(LOW TONE END) RD2900	1 PC	
6	U0697050	SPRING COLLAR (2) AC910	1 PC	
60	WWD12370	LEG PIPE LEG BASE UNIT (HIGH TONE END) R	1 PC	
61	WWD12420	SIDE PIPE UNIT(HIGH TONE END) RD2400	1 PC	
62	WWD12470	KNOB BOLT M12 RD2400	1 PC	
7	W2389760	GAS SPRING 20K YM5100A	1 PC	
8	WV430850	NYLON BUSHING YM5100A	1 PC	
80	WWE68860	FRAME END ASS'Y(LOW TONE END) YMRD2900A	1 PC	
80-1	W5143021	RAIL JOINT YM41	1 PC	
80-2	WWE68880	RESONATOR ADJUSTER (LOW TONE REAR)YMRD29	1 PC	
80-3	EP345406	RESONATOR ADJUSTER MOUNTING SCREW(1)	1 PACK(6PC/PACK)	
80-4	WWE68870	RESONATOR ADJUSTER(LOW TONE END) YMRD290	1 PC	
80-5	EP351452	FLAT HEAD WOOD SCREW 5.1X45	1 PACK(2PC/PACK)	
80-6	W5110712	LEG MOUNT YM2400	1 PC	
81	WWE68890	FRAME END ASS'Y(HIGH TONE SIDE) YMRD2900	1 PC	
81-1	W5143021	RAIL JOINT YM41	1 PC	
81-2	W5113341	RESONATOR ADJUSTER (HIGH TONE REAR) YM41	1 PC	
81-3	EP345326	FLAT HEAD WOOD SCREW 4.5X32	1 BAG	
81-4	W5113371	RESONATOR ADJUSTER(NATURAL HIGH) YM2400	1 PC	
81-5	EP345326	FLAT HEAD WOOD SCREW 4.5X32	1 BAG	
81-6	W5110712	LEG MOUNT YM2400	1 PC	
82	WWE68800	TONE BAR ASSY( NATURAL)YMRD2900A	1 PC	
82-1	WWF31950	TONE BAR 21K F YMRD2900A	1 PC	
82-10	W5026080	TONE BAR 37K A YM2400	1 PC	
82-11	W5026090	TONE BAR 39K B YM2400	1 PC	
82-12	W5026100	TONE BAR 40K C YM2400	1 PC	
82-13	W5026110	TONE BAR 42K D YM2400	1 PC	
82-14	W5026120	TONE BAR 44K E YM2400	1 PC	
82-15	W5026130	TONE BAR 45K F YM2400	1 PC	
82-16	W5026140	TONE BAR 47K G YM2400	1 PC	
82-17	W5026150	TONE BAR 49K A YM2400	1 PC	
82-18	W5026160	TONE BAR 51K B YM2400	1 PC	
82-19	W5026170	TONE BAR 52K C YM2400	1 PC	
82-2	WWF31960	TONE BAR 23K G YMRD2900A	1 PC	
82-20	W5026180	TONE BAR 54K D YM2400	1 PC	
82-21	W5026190	TONE BAR 56K E YM2400	1 PC	
82-22	W5026200	TONE BAR 57K F YM2400	1 PC	

Model Name : YMRD2900

Ref No.	Parts No.(ChangeNo.)	English Name	Minimum Delivery	Accept order or not
82-23	W5026210	TONE BAR 59K G YM2400	1 PC	
82-24	W5026220	TONE BAR 61K A YM2400	1 PC	
82-25	W5026230	TONE BAR 63K B YM2400	1 PC	
82-26	W5026240	TONE BAR 64K C YM2400	1 PC	
82-27	W5026250	TONE BAR 66K D YM2400	1 PC	
82-28	W5026260	TONE BAR 68K E YM2400	1 PC	
82-29	W5026270	TONE BAR 69K F YM2400	1 PC	
82-3	W5026010	TONE BAR 25K A YM2400	1 PC	
82-30	W5026280	TONE BAR 71K G YM2400	1 PC	
82-31	W5026290	TONE BAR 73K A YM2400	1 PC	
82-32	W5026300	TONE BAR 75K B YM2400	1 PC	
82-33	W5026310	TONE BAR 76K C YM2400	1 PC	
82-34	W5110270	TONE BAR SUS.CORD(BRAIDED VINYLON)YM4000	1 PC.	Discontinued.
82-35	W5110010	CODE TENSION SPRING (L) YT,YV	1 PC.	
82-4	W5026020	TONE BAR 27K B YM2400	1 PC	
82-5	W5026030	TONE BAR 28K C YM2400	1 PC	
82-6	W5026040	TONE BAR 30K D YM2400	1 PC	
82-7	W5026050	TONE BAR 32K E YM2400	1 PC	
82-8	W5026060	TONE BAR 33K F YM2400	1 PC	
82-9	W5026070	TONE BAR 35K G YM2400	1 PC	
83	WWE68810	TONE BAR ASS'Y(ACCIDENTAL)YM2400	1 PC	
83-1	WWF31970	TONE BAR 22K F# YMRD2900A	1 PC	
83-10	W5026580	TONE BAR 43K D# YM2400	1 PC	
83-11	W5026590	TONE BAR 46K F# YM2400	1 PC	
83-12	W5026600	TONE BAR 48K G# YM2400	1 PC	
83-13	W5026610	TONE BAR 50K A# YM2400	1 PC	
83-14	W5026620	TONE BAR 53K C# YM2400	1 PC	
83-15	W5026630	TONE BAR 55K D# YM2400	1 PC	
83-16	W5026640	TONE BAR 58K F# YM2400	1 PC	
83-17	W5026650	TONE BAR 60K G# YM2400	1 PC	
83-18	W5026660	TONE BAR 62K A# YM2400	1 PC	
83-19	W5026670	TONE BAR 65K C# YM2400	1 PC	
83-2	WWF31980	TONE BAR 24K G# YMRD2900A	1 PC	
83-20	W5026680	TONE BAR 67K D# YM2400	1 PC	
83-21	W5026690	TONE BAR 70K F# YM2400	1 PC	
83-22	W5026700	TONE BAR 72K G# YM2400	1 PC	
83-23	W5026710	TONE BAR 74K A# YM2400	1 PC	
83-24	W5110010	CODE TENSION SPRING (L) YT,YV	1 PC.	
83-25	W5110270	TONE BAR SUS.CORD(BRAIDED VINYLON)YM4000	1 PC.	Discontinued.
83-3	W5026510	TONE BAR 26K A# YM2400	1 PC	

Model Name : YMRD2900

Ref No.	Parts No.(ChangeNo.)	English Name	Minimum Delivery	Accept order or not
83-4	W5026520	TONE BAR 29K C# YM2400	1 PC	
83-5	W5026530	TONE BAR 31K D# YM2400	1 PC	
83-6	W5026540	TONE BAR 34K F# YM2400	1 PC	
83-7	W5026550	TONE BAR 36K G# YM2400	1 PC	
83-8	W5026560	TONE BAR 38K A# YM2400	1 PC	
83-9	W5026570	TONE BAR 41K C# YM2400	1 PC	
84	WWE68900	RAIL NO.1 ASSY YMRD2900A	1 PC	
84-1	W5134650	RUBBER INSULATOR	1 PC	
84-2	W5134580	TONE BAR SUSPENSION POST(L)	1 PC	
84-3	EP035326	FLAT HEAD WOOD SCREW 3.5X32	1 PACK(6PC/PACK)	
84-4	WV430640	RAIL CRAMP SUPORT RUBBER YM5100A	1 PC	
84-5	WV430630	RAIL CRAMP RUBBER YM5100A	1 PC	
84-6	W5134570	TONE BAR SUSPENSION POST(M)	1 PC	
84-7	WV430570	RAIL HINGE ASSY YM5100A	1 PC	
84-8	EP335206	FLAT HEAD WOOD SCREW 3.5X20	1 BAG	ORDER STOP
85	WWE68910	RAIL NO.2 ASSY YMRD2900A	1 PC	
85-1	W5134650	RUBBER INSULATOR	1 PC	
85-2	W5134580	TONE BAR SUSPENSION POST(L)	1 PC	
85-3	EP035326	FLAT HEAD WOOD SCREW 3.5X32	1 PACK(6PC/PACK)	
85-4	WV430640	RAIL CRAMP SUPORT RUBBER YM5100A	1 PC	
85-5	WV430630	RAIL CRAMP RUBBER YM5100A	1 PC	
85-6	W5134570	TONE BAR SUSPENSION POST(M)	1 PC	
85-7	WV430570	RAIL HINGE ASSY YM5100A	1 PC	
85-8	EP335206	FLAT HEAD WOOD SCREW 3.5X20	1 BAG	ORDER STOP
85-9	WWE68940	RAIL JOINT (FRONT) YMRD2900A	1 PC	
86	WWE68920	RAIL NO.3 ASSY YMRD2900A	1 PC	
86-1	W5134650	RUBBER INSULATOR	1 PC	
86-10	WWE68950	RAIL JOINT (MIDDLE) YMRD2900A	1 PC	
86-2	W5134580	TONE BAR SUSPENSION POST(L)	1 PC	
86-3	EP035326	FLAT HEAD WOOD SCREW 3.5X32	1 PACK(6PC/PACK)	
86-4	WV430640	RAIL CRAMP SUPORT RUBBER YM5100A	1 PC	
86-5	WV430630	RAIL CRAMP RUBBER YM5100A	1 PC	
86-6	W5134570	TONE BAR SUSPENSION POST(M)	1 PC	
86-7	WV430570	RAIL HINGE ASSY YM5100A	1 PC	
86-8	EP335206	FLAT HEAD WOOD SCREW 3.5X20	1 BAG	ORDER STOP
86-9	WWE68960	RAIL JOINT (REAR) YMRD2900A	1 PC	
87	WWE68930	RAIL NO.4 ASSY YMRD2900A	1 PC	
87-1	W5134650	RUBBER INSULATOR	1 PC	
87-2	W5134580	TONE BAR SUSPENSION POST(L)	1 PC	
87-3	EP035326	FLAT HEAD WOOD SCREW 3.5X32	1 PACK(6PC/PACK)	

